

DBR Series Round Baffle Slim Downlight

DATE	PROJECT
TYPE	CATALOG NO.

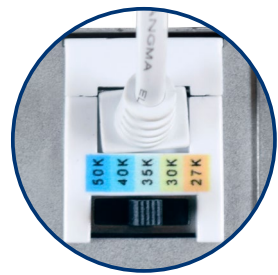


PRODUCT OVERVIEW

FEATURES

- Available in 4-, 6-, and 8-inch round diameter models
- Field selectable color temperature (CCT)
- Regressed lens with Baffle for less glare
- Closed cell gasket included for use in wet location environments
- 120V Forward or Reverse Phase Dimming down to 10%
- IC Rated, air-tight, and ENERGY STAR®

5 Selectable CCTs
2700K/3000K/3500K/4000K/5000K



PERFORMANCE

Catalog No.	Size	Lumen Output ¹	Input Power	CRI	Color Temperature
DBR40-S1W	4-Inch Round	820Lm	10W	90+	2700K / 3000K / 3500K / 4000K / 5000K
DBR60-S1W	6-Inch Round	1100Lm	13W		
DBR80-S1W	8-Inch Round	1500Lm	18W		

1. Values are nominal and vary based on CCT

DBR Series

Round Baffle Slim Downlight

DATE PROJECT

TYPE CATALOG NO.

TECHNICAL INFORMATION

MATERIAL SPECIFICATIONS

Fixture

Die cast aluminum

Shape

Round

Sizes

Available in 4-, 6-, and 8-inch diameter models

Finish

Matte white

Lens

Polycarbonate light diffuser for uniform even light distribution

Trim Style

Baffle

LED CHARACTERISTICS

Color Temperature
Selectable CCT: 2700K / 3000K / 3500K / 4000K / 5000K
Factory default set to 2700K
Color Rendering Index (CRI)

90+

R9 Value

High color performance with R9 value greater than 50

Color Consistency
<4-Step MacAdam Ellipse binning to achieve Fixture to Fixture
Color Consistency
Beam Angle

110°

LED Life

50,000 Hours @ 70% Lumen Maintenance

ELECTRICAL

Driver

Constant Current, Class 2

Power Factor

≥0.9

Input Voltage

120V

Operating Frequency

60Hz

Operating Temperature

-4°F to 104°F (-20°C to 40°C)

Dimmable
120V Forward or Reverse Phase Dimming down to 10%
(See dimmer compatibility list)

COMPLIANCE

cETLus

cETLus listed in accordance with UL 1598 and CSA C22.2 No. 250.0

Environment

Suitable for Wet Locations, covered ceilings

Energy Rating

ENERGY STAR® Certified

Title 24
Complies with Title 24 Part 6 JA8 High Efficacy LED Light
Source Requirements
National Electric Code (NEC)
Suitable for use in clothes closets when installed in accordance with
NEC® 410.16 (A)(1) (C)(3) spacing requirements
IC Rated

Suitable for direct contact with insulation

Air-Tight

Housing certified in accordance with ASTM E283

INSTALLATION

Mounting
No housing required. Two steel tension spring clips secure luminaire
to ceiling. Accommodates ceiling thickness up to 1 inch. New
construction mounting plates are available.
Remote Driver Construction
Steel driver/junction box with captive hinged junction box cover. Easy
to wire 1 in / 1 out (plus ground) applications. Two (2) conduit pry outs
and three (3) poke-in connectors to facilitate wiring.
Template Size

4-inch: 4-1/4"

6-inch: 6-1/4"

8-inch: 8-1/4"

5 YEAR LIMITED WARRANTY

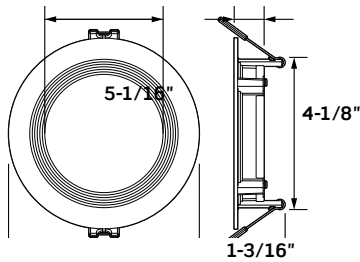
Leviton warrants to its customer and the original end user the LED
electronics and components of its properly installed LED products,
to be free of defects in material and workmanship, in normal use, for
a period of five (5) years from the date of shipment by Leviton and
warrants the painted finish for a period of one (1) year from the date of
shipment by Leviton.See the rest of our warranty [here](#).

DBR Series Round Baffle Slim Downlight

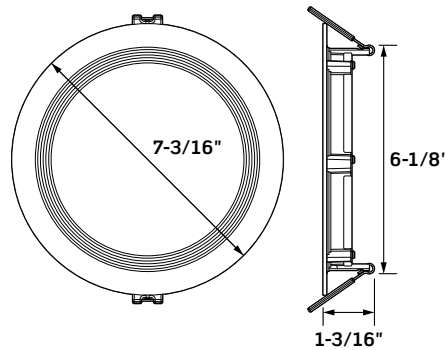
DATE	PROJECT
TYPE	CATALOG NO.

DIMENSIONS

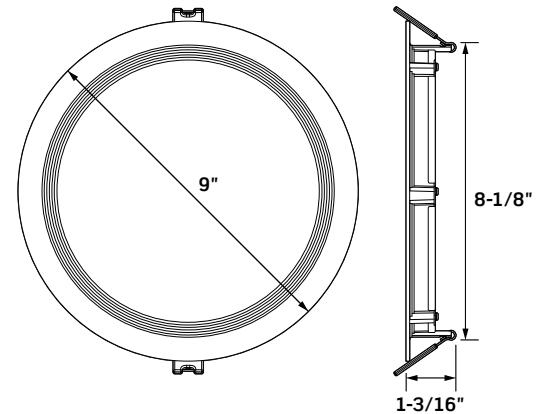
DBR40-S1W



DBR60-S1W



DBR80-S1W



ORDERING INFORMATION

ROUND BAFFLE SLIM DOWNLIGHTS



CAT. NO.	Description	UPC Number	Std. Pack
DBR40-S1W	4" Round Baffle Slim Downlight	07847701456 1	12
DBR60-S1W	6" Round Baffle Slim Downlight	07847701460 8	12
DBR80-S1W	8" Round Baffle Slim Downlight	07847701461 5	12

ACCESSORIES



CAT. NO.	Description	UPC Number	Std. Pack
DBRCX-H00	4 7/8" New Construction Mounting Plate	07847702352 5	15
DBRUX-H00	4 7/8" / 8" New Construction Mounting Plate	07847702024 1	15

DBR Series Round Baffle Slim Downlight

DATE	PROJECT
TYPE	CATALOG NO.

DIMMER COMPATIBILITY

The following list of Dimming Controls have gone through testing by Leviton to determine proper operation when paired with the Leviton Surface Mount Downlights

Supplier	Series	Model No.	Dimming Type	Dimming Range
Leviton	SureSlide	6672	Forward Phase	100-10%
Leviton	SureSlide	6674N	Forward Phase	100-10%
Leviton	SureSlide	66741	Forward Phase	100-10%
Leviton	SureSlide	66DF	Forward Phase	100-10%
Leviton	IllumaTech	IPL06	Forward Phase	100-10%
Leviton	IllumaTech	IPE04	Reverse Phase	100-10%
Leviton	Decora Slide with Lever Edge	ESL01	Forward Phase	100-10%
Leviton	Decora Slide	DSL01	Forward Phase	100-10%
Leviton	Decora Slide	DSE06	Reverse Phase	100-10%
Leviton	Decora Slide	DSM10	Forward Phase	100-10%
Leviton	Decora Digital	DDM06	Forward Phase	100-10%
Leviton	Decora Digital	DDE06	Reverse Phase	100-10%
Leviton	Decora Digital	DDL06-1	Forward Phase	100-10%
Leviton	Decora Digital	DDL06-B	Forward Phase	100-10%
Leviton	Decora Smart Wi-Fi	D36HD	Forward Phase	100-10%
Leviton	Decora Smart Wi-Fi	D26HD	Forward Phase	100-10%
Leviton	Decora Smart Wi-Fi	D2ELV	Phase Selectable (Reverse / Forward)	100-10%
Leviton	Decora Smart Wi-Fi	D2MSD	Forward Phase	100-10%
Leviton	Decora Smart Z-Wave	ZW6HD	Forward Phase	100-10%
Leviton	Decora Evolve	VM2D3	Forward Phase	100-10%
Leviton	Decora Evolve	VMDD3	Forward Phase	100-10%
Leviton	Toggle Slide	TSL01	Forward Phase	100-10%
Leviton	Toggle Slide	TSM10	Forward Phase	100-10%
Leviton	Trimatron Rotary	RDL06	Forward Phase	100-10%
Leviton	Trimatron Rotary	RNL06	Forward Phase	100-10%

DBR Series Round Baffle Slim Downlight

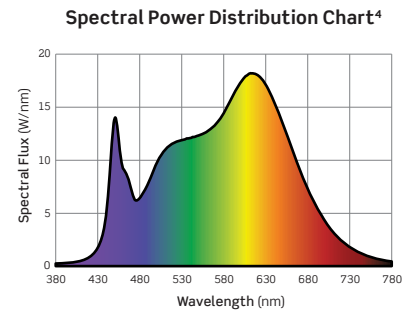
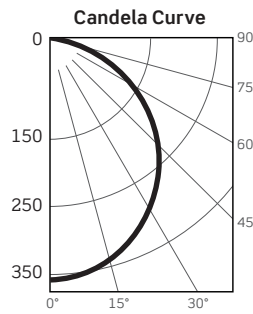
DATE	PROJECT
TYPE	CATALOG NO.

PHOTOMETRICS

DBR40-011-S1W: 4-Inch Round Baffle Slim Downlight

Fixture Delivered Lumens: 946
 Total Watts@120V: 9.8
 Lumens Per Watt: 96.6
 Center Beam Candle Power: 359
 Beam Distribution: 110°
 Spacing Criterion: 1.34
 Color Rendering Index (CRI)¹: 95.6
 Color Temperature (CCT)²: 3493K
 Designed for 50,000 Hour Lamp Life³
 LM-63 Test No. G24090501
 LM-79 Test No. S24091703

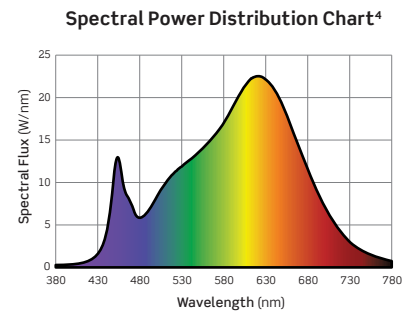
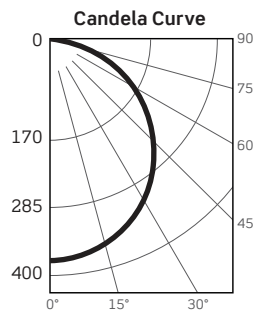
Intensity Distribution		
DISTANCE (FT.)	FOOTCANDLES (FC)	BEAM DIAMETER (FT.)
6 FT	10.0	17.1
8 FT	5.6	22.8
10 FT	3.6	28.6
12 FT	2.5	34.3
14 FT	1.8	40.0
16 FT	1.4	45.7



DBR60-001-S1W: 6-Inch Round Baffle Slim Downlight

Fixture Delivered Lumens: 1044
 Total Watts@120V: 14.7
 Lumens Per Watt: 71.0
 Center Beam Candle Power: 374
 Beam Distribution: 110.4°
 Spacing Criterion: 1.37
 Color Rendering Index (CRI)¹: 94.6
 Color Temperature (CCT)²: 2965K
 Designed for 50,000 Hour Lamp Life³
 LM-63 Test No. G26031101
 LM-79 Test No. S26031703

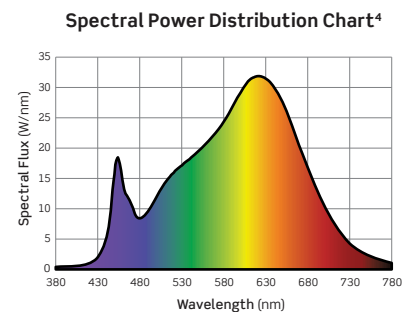
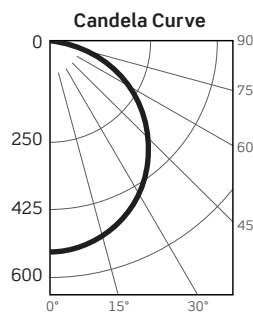
Intensity Distribution		
DISTANCE (FT.)	FOOTCANDLES (FC)	BEAM DIAMETER (FT.)
6 FT	10.4	17.3
8 FT	5.8	23.0
10 FT	3.7	28.8
12 FT	2.6	34.6
14 FT	1.9	40.3
16 FT	1.5	46.1



DBR80-001-S1W: 8-Inch Round Baffle Slim Downlight

Fixture Delivered Lumens: 1491
 Total Watts@120V: 17.4
 Lumens Per Watt: 85.7
 Center Beam Candle Power: 534
 Beam Distribution: 110.5°
 Spacing Criterion: 1.37
 Color Rendering Index (CRI)¹: 94.9
 Color Temperature (CCT)²: 2983K
 Designed for 50,000 Hour Lamp Life³
 LM-63 Test No. G26031102
 LM-79 Test No. S26031202

Intensity Distribution		
DISTANCE (FT.)	FOOTCANDLES (FC)	BEAM DIAMETER (FT.)
6 FT	14.8	17.3
8 FT	8.3	23.0
10 FT	5.3	28.8
12 FT	3.7	34.6
14 FT	2.7	40.3
16 FT	2.1	46.1



1. Accuracy of Rendering Colors 2. Color Appearance of Light Source 3. Dependent on Surrounding Temperatures 4. Colors Present within the Light Source

PHOTOMETRIC MULTIPLICATION FACTORS

Lumen output values fluctuate based on Color Temperature (CCT), Color Rendering Index (CRI), Trim Finish, and Wattage.

To estimate lumen output of other combinations, multiply the published results by the following factors:

DBR40	
CCT	90+ CRI
2700K	0.93
3000K	0.96
3500K	1.00
4000K	1.01
5000K	0.99

DBR60	
CCT	90+ CRI
2700K	0.98
3000K	1.00
3500K	1.11
4000K	1.13
5000K	1.10

DBR80	
CCT	90+ CRI
2700K	1.02
3000K	1.00
3500K	1.09
4000K	1.10
5000K	1.10

DBR Series Round Baffle Slim Downlight

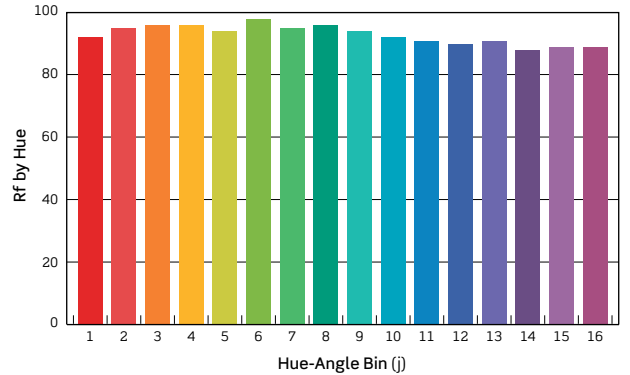
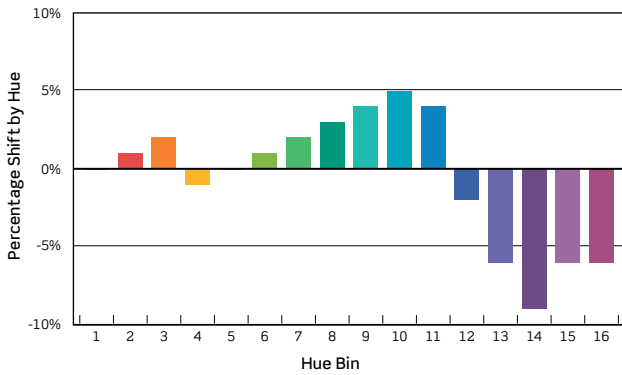
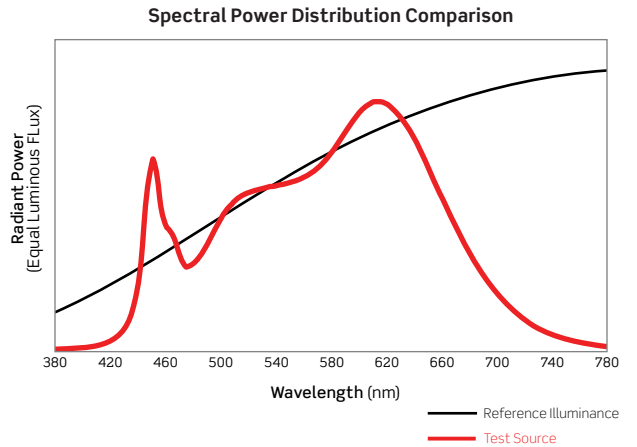
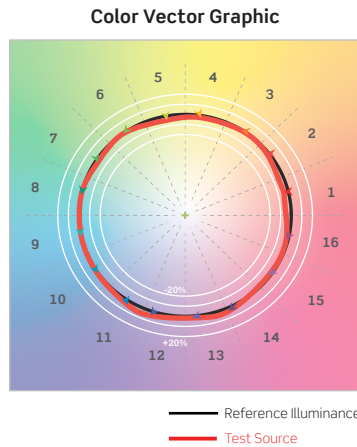
DATE	PROJECT
TYPE	CATALOG NO.

PHOTOMETRICS

TM-30 DATA: DBR40-011-S1W 4-Inch Round Baffle Slim Downlight

ANSI/IES TM-30-18 Color Rendition Report Test No. S24091703

R_f	93
R_g	99
CCT(K)	3493K
D_{uv}	-0.0008
u^l	0.2362
v^l	0.5104



HUE BIN	1	2	3	4	5	6	7	8	9	10	11	12	13	14	15	16
HUE SHIFT	0%	1%	2%	-1%	0%	1%	2%	3%	4%	5%	4%	-2%	-6%	-9%	-6%	-6%
R _f VALUE	92	95	96	96	94	98	95	96	94	92	91	90	91	88	89	89

Colors are for visual orientation purposes only

DBR Series Round Baffle Slim Downlight

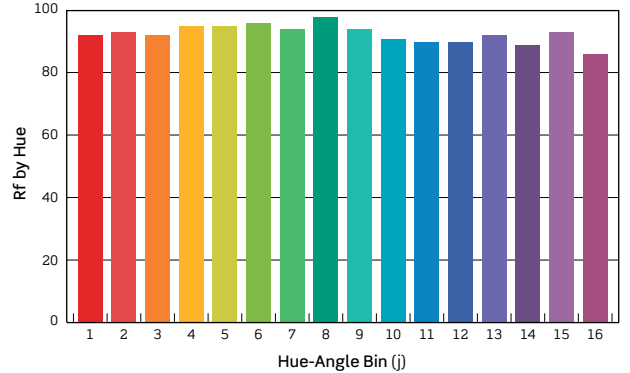
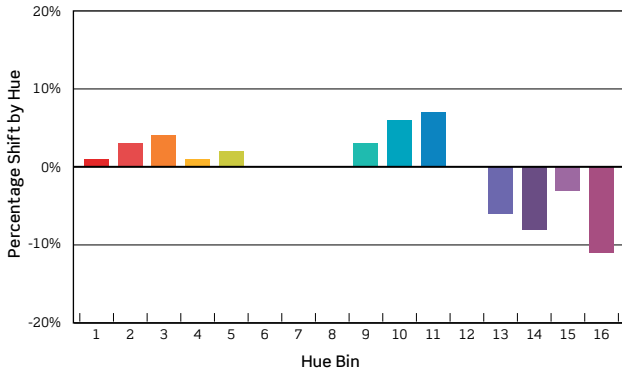
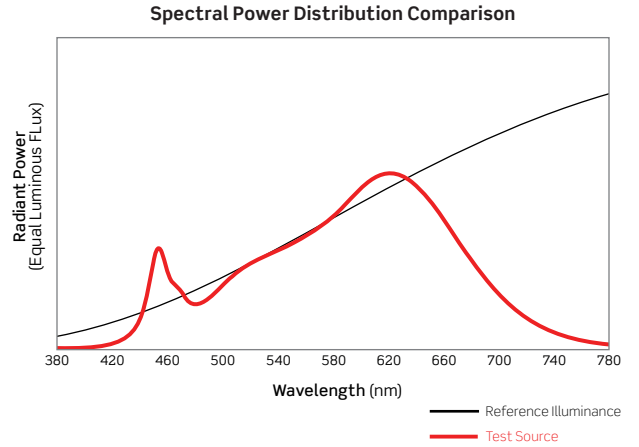
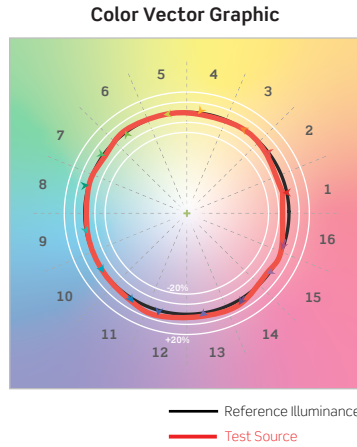
DATE	PROJECT
TYPE	CATALOG NO.

PHOTOMETRICS

TM-30 DATA: DBR60-001-S1W 6-Inch Round Baffle Slim Downlight

ANSI/IES TM-30-18 Color Rendition Report Test No. S26031703

R_f	92
R_g	100
CCT(K)	2965K
D_{uv}	-0.0036
u^l	0.2531
v^l	0.5170



HUE BIN	1	2	3	4	5	6	7	8	9	10	11	12	13	14	15	16
HUE SHIFT	1%	3%	4%	1%	2%	0%	0%	0%	3%	6%	7%	0%	-6%	-8%	-3%	-11%
R _f VALUE	92	93	92	95	95	96	94	98	94	91	90	90	92	89	93	86

Colors are for visual orientation purposes only

DBR Series Round Baffle Slim Downlight

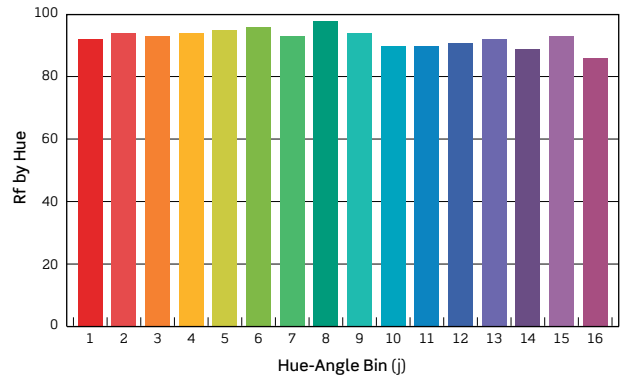
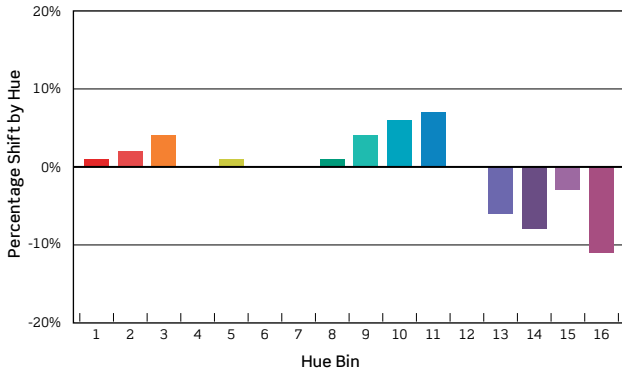
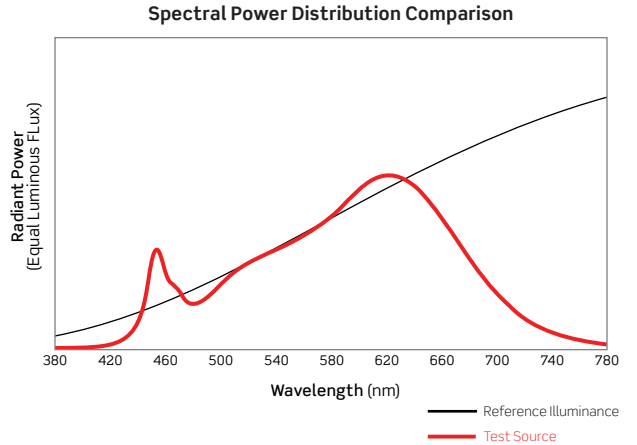
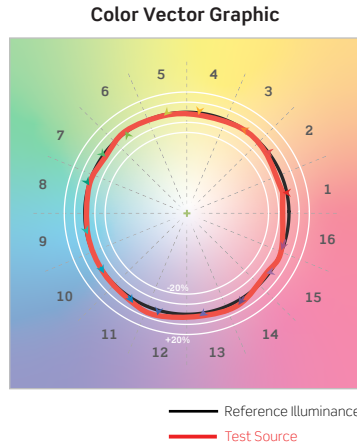
DATE	PROJECT
TYPE	CATALOG NO.

PHOTOMETRICS

TM-30 DATA: DBR80-001-S1W 8-Inch Round Baffle Slim Downlight

ANSI/IES TM-30-18 Color Rendition Report Test No. S26031202

R_f	92
R_g	100
CCT(K)	2983K
D_{uv}	-0.0027
u^l	0.2521
v^l	0.5179



HUE BIN	1	2	3	4	5	6	7	8	9	10	11	12	13	14	15	16
HUE SHIFT	1%	2%	4%	0%	1%	0%	0%	1%	4%	6%	7%	0%	-6%	-8%	-3%	-11%
Rf VALUE	92	94	93	94	95	96	93	98	94	90	90	91	92	89	93	86

Colors are for visual orientation purposes only