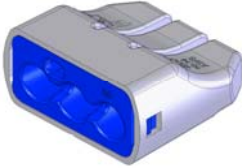




MODEL 39

**IN-SURE™
PUSH-IN CONNECTORS**

FEATURES/BENEFITS:



- 10 AWG SOLID/STRANDED CAPABILITY FOR HIGH CURRENT APPLICATIONS
- COMPACT SIZE FITS THROUGH 1/2" KO ALLOWS MORE WIRING OPTIONS
- LOW INSERTION FORCE MAY REDUCE RISK OF REPETITIVE TRAUMA INJURY
- WIDE WIRE RANGE FOR EASY INSTALLATION AT OEM AND IN FIELD
- TRANSPARENT SHELL ENABLES EASY VERIFICATION OF CONNECTION
- GROUND RATING ELIMINATES NEED FOR SPECIAL "GROUND" CONNECTOR

ELECTRICAL:

VOLTAGE
GENERAL: 600 V MAX
SIGNS/LUMINAIRES: 1000 V MAX

MECHANICAL:

1/2"KO (0.875" HOLE): COMPLIANT

PHYSICAL:

HOUSING: NYLON/PC
CONTACTS: COPPER
PLATING: TIN
TEMPERATURE: 105 C (221 F)
STRIP LENGTH: 3/8-1/2" (9,5 - 13 mm)
COLOR: BLUE/TRANSPARENT

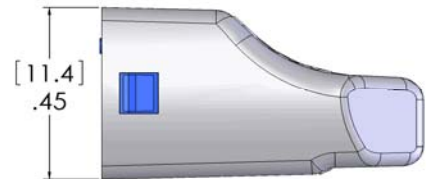
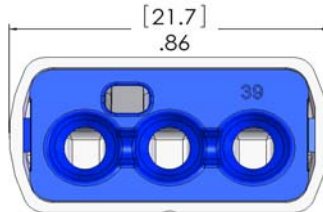
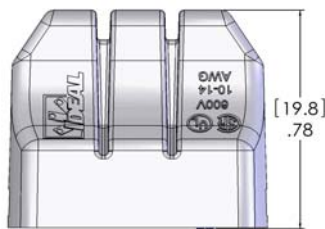
STANDARDS & SPECIFICATIONS:

UL 486C, UL 467 GROUNDING
CSA C22.2 #188
RoHS COMPLIANT
UL 94V-2 FLAME RATING

WIRE RANGE:

	MODEL 39
SOLID	10 -14 AWG
STRANDED	10 -12 AWG (≤19 STRAND)
TIN BONDED	10 -14 AWG (≤19 STRAND)

DIMENSIONS:



ORDERING INFO:

CATALOG # 30-1639	MODEL 39	# PORTS 3	PACKAGE TYPE: 2,500 PIECE CARTON	WEIGHT LBS (KG): 21.2 (9,6)
----------------------	-------------	--------------	-------------------------------------	--------------------------------

FACTORY CONTACT:

ENGINEERED SOLUTIONS
IDEAL INDUSTRIES, INC.
BECKER PLACE SYCAMORE IL
USA 60178
P: 1-800-324-9571
F: 1-888-222-6140
E: oem@idealindustries.com

SALES CONTACT: