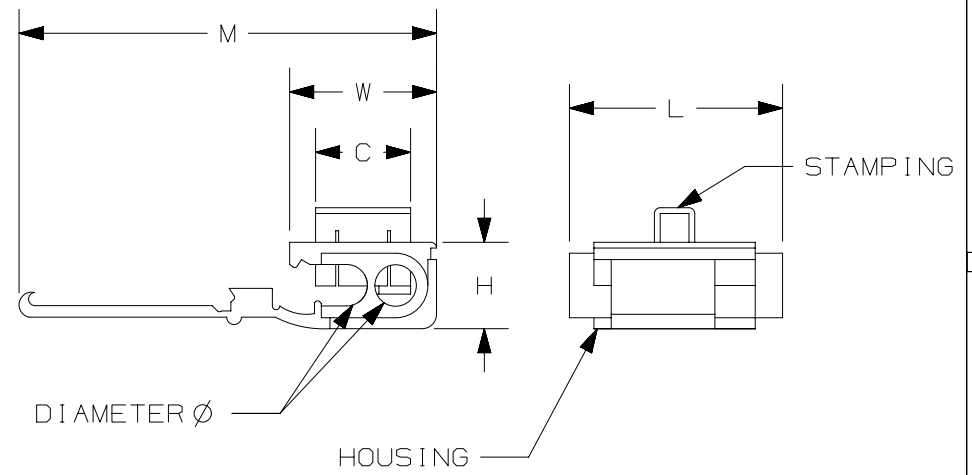


THIS COPY IS PROVIDED ON A RESTRICTED BASIS AND IS NOT TO BE USED IN ANY WAY DETRIMENTAL TO THE INTERESTS OF PANDUIT CORP.

PANDUIT PART #	WIRE RANGE		DIMENSIONS in. [mm]					
	AWG [mm <sup>2</sup> ]	[mm <sup>2</sup> ]	∅ ± .02 [0.4]	L ± .02 [0.5]	H ± .02 [0.5]	W ± .02 [0.5]	C ± .02 [0.4]	M ± .02 [0.6]
EQSP18D	#22-16	0.5-1.5	.13 [3.3]	.76 [19.4]	.30 [7.6]	.46 [11.7]	.33 [8.5]	1.30 [33.0]

NOTES:

- UL LISTED FOR:
  - STRANDED COPPER WIRE ONLY
  - 221°F [105°C] MAX. OPERATING TEMPERATURE
  - 600 V. MAX VOLTAGE RATING
- MATERIAL:
  - STAMPING: .019" [0.5] THICK BRASS, TIN PLATED
  - HOUSING: POLYPROPYLENE, RED
- SEE [www.panduit.com](http://www.panduit.com) FOR PACKAGE QUANTITIES
- DIMENSIONS IN BRACKETS ARE METRIC EQUIVALENT



TITLE		STRONGHOLD QUICK SPLICE CONNECTOR INSULATION DISPLACEMENT #22-16 AWG CUSTOMER DRAWING		
ITEM REVISION NAME		00123SST/00		
DATASET FILE NAME		00123SST/00		
UNLESS OTHERWISE SPECIFIED, DIMENSIONAL TOLERANCES ARE: IN [mm]		MATERIAL:		
.x ± .1 [2.54] .xx ± .01 [.25]		.xxx ± .005 [.127] ANGLES ± 5°		
DRAWN BY		DRAWING NUMBER:		
JHNU		00123SST-DC		
DATE		SCALE		SIZE
-		N.T.S.		A
CHK		SHT 1 OF 1		
-				

REV	DATE	BY	CHK	APR	DESCRIPTION	ECN
00	2/18	JHNU	TMR	RGB	DRAWING RELEASED	00123SS

D10100DA/15