



Harsh & Hazardous

**KILLARK**<sup>®</sup>

# E Series

## Commercial & Industrial Conduit Bodies





## ALUMINUM - CONDUIT BODIES

UL - Standard 514B  
 SB - C22.2 #18

### FEATURES-SPECIFICATIONS

#### Applications

- For use on threaded rigid/IMC conduit
- Use conduit bodies for making turns in conduit systems, connecting conduit sections, as pull outlets, and to provide openings for maintenance and making taps and splices to conductors

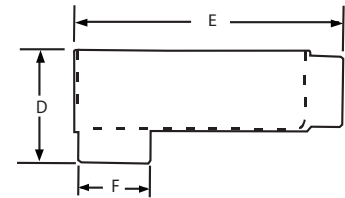
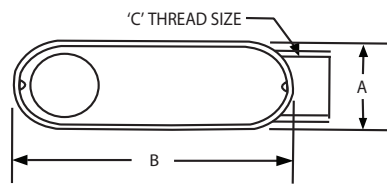
#### Features

- Flat back design for easy mounting close to walls
- Cast of high strength, corrosion and weather resistant aluminum alloy with painted finish
- May be used on aluminum or steel conduit
- Lightweight, makes installation simple



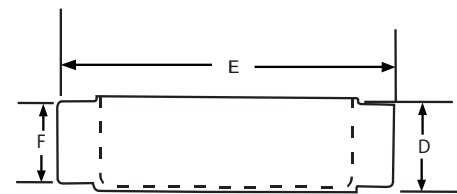
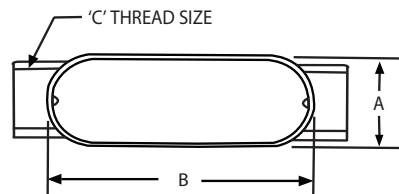
Type LB

TYPE LB							
CATALOG NUMBER	CONDUIT SIZE	DIMENSIONS					
		A	B	C	D	E	F
EALB-1	1/2"	1-5/16"	3-7/8"	1/2"	2-1/8"	4-3/8"	1-1/16"
EALB-2	3/4"	1-1/2"	4-5/8"	3/4"	2-7/16"	5-1/8"	1-11/32"
EALB-3	1"	1-3/4"	5-3/8"	1"	2-13/16"	5-15/16"	1-21/32"
EALB-4	1-1/4"	2-1/2"	6-5/8"	1-1/4"	3-3/4"	6-7/8"	2-1/4"
EALB-5	1-1/2"	2-1/2"	6-5/8"	1-1/2"	3-3/4"	6-7/8"	2-1/4"
EALB-6	2"	3-1/8"	8-1/2"	2"	4-1/8"	9-7/32"	2-15/16"
EALB-7	2-1/2"	4-9/16"	12-1/4"	2-1/2"	5-13/16"	13-1/8"	3-7/16"
EALB-8	3"	4-9/16"	12-1/4"	3"	5-13/16"	13-1/8"	4-7/64"
EALB-9	3-1/2"	5-7/16"	14-7/8"	3-1/2"	7-1/4"	15-3/8"	5-9/64"
EALB-10	4"	5-7/16"	14-7/8"	4"	7-1/4"	15-3/8"	5-9/64"

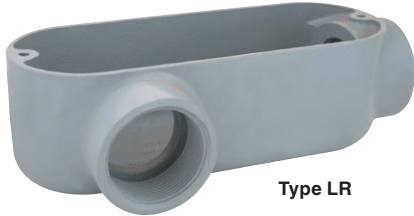


Type C

TYPE C							
CATALOG NUMBER	CONDUIT SIZE	DIMENSIONS					
		A	B	C	D	E	F
EAC-1	1/2"	1-5/16"	3-7/8"	1/2"	1-7/16"	4-29/32"	1-1/16"
EAC-2	3/4"	1-1/2"	4-5/8"	3/4"	1-11/16"	5-1/2"	1-11/32"
EAC-3	1"	1-3/4"	5-3/8"	1"	1-15/16"	6-7/16"	1-21/32"
EAC-4	1-1/4"	2-1/2"	6-5/8"	1-1/4"	2-7/8"	8-7/16"	2-1/4"
EAC-5	1-1/2"	2-1/2"	6-5/8"	1-1/2"	2-7/8"	8-7/16"	2-1/4"
EAC-6	2"	3-1/8"	8-1/2"	2"	3-7/16"	10-3/4"	2-15/16"
EAC-7	2-1/2"	4-9/16"	12-1/4"	2-1/2"	4"	14"	3-7/16"
EAC-8	3"	4-9/16"	12-1/4"	3"	4-3/4"	13-1/2"	4-7/64"
EAC-9	3-1/2"	5-7/16"	14-7/8"	3-1/2"	5-1/2"	15-29/32"	5-9/64"
EAC-10	4"	5-7/16"	14-7/8"	4"	5-1/2"	15-29/32"	5-9/64"

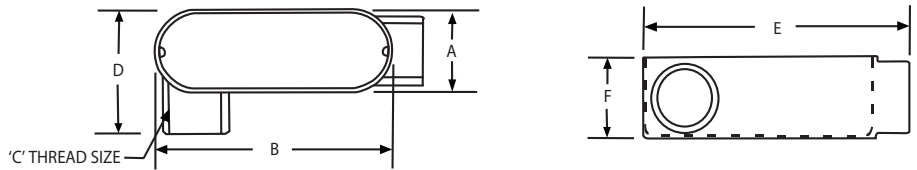


### ALUMINUM - CONDUIT BODIES



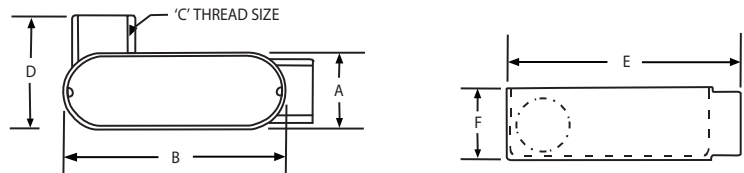
Type LR

TYPE LR							
CATALOG NUMBER	CONDUIT SIZE	DIMENSIONS					
		A	B	C	D	E	F
EALR-1	1/2"	1-5/16"	3-7/8"	1/2"	2-3/64"	4-3/8"	1-7/16"
EALR-2	3/4"	1-1/2"	4-5/8"	3/4"	2-5/16"	5-1/8"	1-11/16"
EALR-3	1"	1-3/4"	5-3/8"	1"	2-21/32"	5-15/16"	1-15/16"
EALR-4	1-1/4"	2-1/2"	6-5/8"	1-1/4"	3-15/32"	6-7/8"	2-7/8"
EALR-5	1-1/2"	2-1/2"	6-5/8"	1-1/2"	3-15/32"	6-7/8"	2-7/8"
EALR-6	2"	3-1/8"	8-1/2"	2"	3-7/8"	9-7/32"	3-7/16"
EALR-7	2-1/2"	4-9/16"	12-1/4"	2-1/2"	6"	13-1/8"	4"
EALR-8	3"	4-9/16"	12-1/4"	3"	6"	13-1/8"	4-3/4"
EALR-9	3-1/2"	5-7/16"	14-7/8"	3-1/2"	6-1/4"	15-3/8"	5-1/2"
EALR-10	4"	5-7/16"	14-7/8"	4"	6-1/4"	15-3/8"	5-1/2"



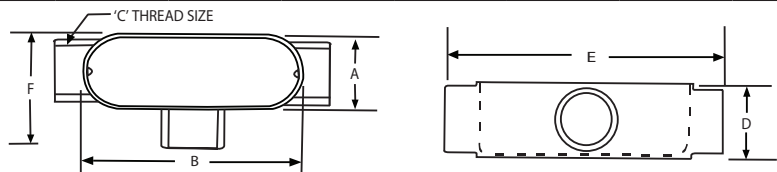
Type LL

TYPE LL							
CATALOG NUMBER	CONDUIT SIZE	DIMENSIONS					
		A	B	C	D	E	F
EALL-1	1/2"	1-5/16"	3-7/8"	1/2"	2-3/64"	4-3/8"	1-7/16"
EALL-2	3/4"	1-1/2"	4-5/8"	3/4"	2-5/16"	5-1/8"	1-11/16"
EALL-3	1"	1-3/4"	5-3/8"	1"	2-21/32"	5-15/16"	1-15/16"
EALL-4	1-1/4"	2-1/2"	6-5/8"	1-1/4"	3-15/32"	6-7/8"	2-7/8"
EALL-5	1-1/2"	2-1/2"	6-5/8"	1-1/2"	3-15/32"	6-7/8"	2-7/8"
EALL-6	2"	3-1/8"	8-1/2"	2"	3-7/8"	9-7/32"	3-7/16"
EALL-7	2-1/2"	4-9/16"	12-1/4"	2-1/2"	6"	13-1/8"	4"
EALL-8	3"	4-9/16"	12-1/4"	3"	6"	13-1/8"	4-3/4"
EALL-9	3-1/2"	5-7/16"	14-7/8"	3-1/2"	6-1/4"	15-3/8"	5-1/2"
EALL-10	4"	5-7/16"	14-7/8"	4"	6-1/4"	15-3/8"	5-1/2"



Type T

TYPE T							
CATALOG NUMBER	CONDUIT SIZE	DIMENSIONS					
		A	B	C	D	E	F
EAT-1	1/2"	1-5/16"	3-7/8"	1/2"	1-7/16"	4-29/32"	2-1/8"
EAT-2	3/4"	1-1/2"	4-5/8"	3/4"	1-11/16"	5-1/2"	2-11/32"
EAT-3	1"	1-3/4"	5-3/8"	1"	1-15/16"	6-7/16"	2-21/32"
EAT-4	1-1/4"	2-1/2"	6-5/8"	1-1/4"	2-7/8"	8-7/16"	3-19/32"
EAT-5	1-1/2"	2-1/2"	6-5/8"	1-1/2"	2-7/8"	8-7/16"	3-19/32"
EAT-6	2"	3-1/8"	8-1/2"	2"	3-7/16"	10-3/4"	4-1/32"
EAT-7	2-1/2"	4-9/16"	12-1/4"	2-1/2"	4"	14"	6-1/4"
EAT-8	3"	4-9/16"	12-1/4"	3"	4-3/4"	13-1/2"	6-1/4"
EAT-9	3-1/2"	5-7/16"	14-7/8"	3-1/2"	5-1/2"	15-29/32"	7"
EALB-10	4"	5-7/16"	14-7/8"	4"	5-1/2"	15-29/32"	7"





## ALUMINUM - CONDUIT BODIES

UL - Standard 514B  
 SB - C22.2 #18

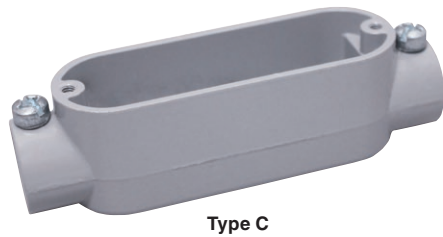
### FEATURES-SPECIFICATIONS

#### Applications

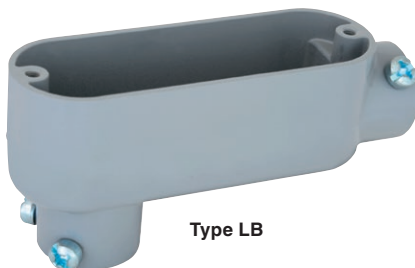
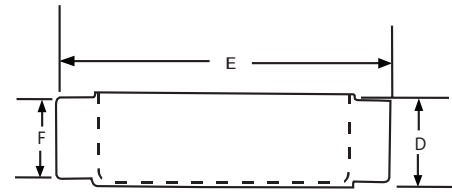
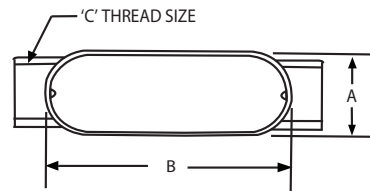
- For use with EMT conduit in dry locations
- Use conduit bodies for making turns in conduit systems, connecting conduit sections, as pull outlets, and to provide openings for maintenance and making taps and splices to conductors

#### Features

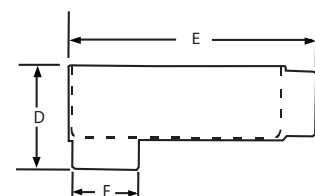
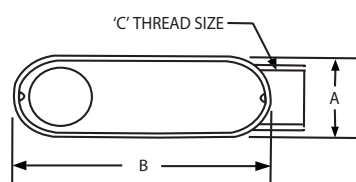
- Flat back design for easy mounting close to walls
- Cast of high strength, corrosion and weather resistant aluminum alloy with painted finish
- May be used on aluminum or steel conduit
- Lightweight, makes installation simple



TYPE C							
CATALOG NUMBER	CONDUIT SIZE	DIMENSIONS					
		A	B	C	D	E	F
EBC-1	1/2"	1-5/16"	3-7/8"	1/2"	1-7/16"	4-29/32"	1-1/16"
EBC-2	3/4"	1-1/2"	4-5/8"	3/4"	1-11/16"	5-1/2"	1-11/32"
EBC-3	1"	1-3/4"	5-3/8"	1"	1-15/16"	6-7/16"	1-21/32"
EBC-4	1-1/4"	2-1/2"	6-5/8"	1-1/4"	2-7/8"	8-7/16"	2-1/4"
EBC-5	1-1/2"	2-1/2"	6-5/8"	1-1/2"	2-7/8"	8-7/16"	2-1/4"
EBC-6	2"	3-1/8"	8-1/2"	2"	3-7/16"	10-3/4"	2-15/16"



TYPE LB							
CATALOG NUMBER	CONDUIT SIZE	DIMENSIONS					
		A	B	C	D	E	F
EBLB-1	1/2"	1-5/16"	3-7/8"	1/2"	2-1/8"	4-3/8"	1-1/16"
EBLB-2	3/4"	1-1/2"	4-5/8"	3/4"	2-7/16"	5-1/8"	1-11/32"
EBLB-3	1"	1-3/4"	5-3/8"	1"	2-13/16"	5-15/16"	1-21/32"
EBLB-4	1-1/4"	2-1/2"	6-5/8"	1-1/4"	3-3/4"	6-7/8"	2-1/4"
EBLB-5	1-1/2"	2-1/2"	6-5/8"	1-1/4"	3-3/4"	6-7/8"	2-1/4"
EBLB-6	2"	3-1/8"	8-1/2"	2"	4-1/8"	9-7/32"	2-15/16"
EBLB-7	2-1/2"	4-9/16"	12-1/4"	2-1/2"	5-13/16"	13-1/8"	3-7/16"
EBLB-8	3"	4-9/16"	12-1/4"	3"	5-13/16"	13-1/8"	4-7/64"
EBLB-9	3-1/2"	5-7/16"	14-7/8"	3-1/2"	7-1/4"	15-3/8"	5-9/64"
EBLB-10	4"	5-7/16"	14-7/8"	4"	7-1/4"	15-3/8"	5-9/64"



# FITTINGS

E SERIES



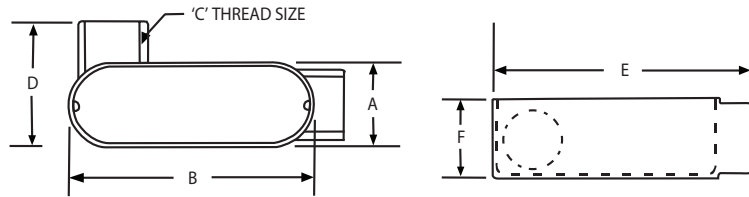
## ALUMINUM - CONDUIT BODIES

- UL - Standard 514B
- CSA - C22.2 #18



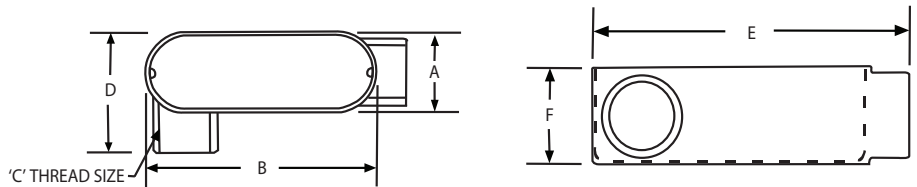
Type LL

TYPE LL							
CATALOG NUMBER	CONDUIT SIZE	DIMENSIONS					
		A	B	C	D	E	F
EBLL-1	1/2"	1-5/16"	3-7/8"	1/2"	2-3/64"	4-3/8"	1-7/16"
EBLL-2	3/4"	1-1/2"	4-5/8"	3/4"	2-5/16"	5-1/8"	1-11/16"
EBLL-3	1"	1-3/4"	5-3/8"	1"	2-21/32"	5-15/16"	1-15/16"
EBLL-4	1-1/4"	2-1/2"	6-5/8"	1-1/4"	3-15/32"	6-7/8"	2-7/8"
EBLL-5	1-1/2"	2-1/2"	6-5/8"	1-1/2"	3-15/32"	6-7/8"	2-7/8"
EBLL-6	2"	3-1/8"	8-1/2"	2"	3-7/8"	9-7/32"	3-7/16"



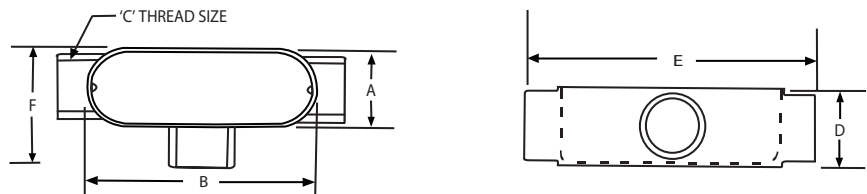
Type LR

TYPE LR							
CATALOG NUMBER	CONDUIT SIZE	DIMENSIONS					
		A	B	C	D	E	F
EBLR-1	1/2"	1-5/16"	3-7/8"	1/2"	2-3/64"	4-3/8"	1-7/16"
EBLR-2	3/4"	1-1/2"	4-5/8"	3/4"	2-15/16"	5-1/8"	1-11/16"
EBLR-3	1"	1-3/4"	5-3/8"	1"	2-21/32"	5-15/16"	1-15/16"
EBLR-4	1-1/4"	2-1/2"	6-5/8"	1-1/4"	3-15/32"	6-7/8"	2-7/8"
EBLR-5	1-1/2"	2-1/2"	6-5/8"	1-1/2"	3-15/32"	6-7/8"	2-7/8"
EBLR-6	2"	3-1/8"	8-1/2"	2"	3-7/8"	9-7/32"	3-7/16"



Type T

TYPE T							
CATALOG NUMBER	CONDUIT SIZE	DIMENSIONS					
		A	B	C	D	E	F
EBT-1	1/2"	1-5/16"	3-7/8"	1/2"	1-7/16"	4-29/32"	2-1/8"
EBT-2	3/4"	1-1/2"	4-5/8"	3/4"	1-11/16"	5-1/2"	2-11/32"
EBT-3	1"	1-3/4"	5-3/8"	1"	1-15/16"	6-7/16"	2-21/32"
EBT-4	1-1/4"	2-1/2"	6-5/8"	1-1/4"	2-7/8"	8-7/16"	3-19/32"
EBT-5	1-1/2"	2-1/2"	6-5/8"	1-1/2"	2-7/8"	8-7/16"	3-19/32"
EBT-6	2"	3-1/8"	8-1/2"	2"	3-7/16"	10-3/4"	4-1/16"





## ALUMINUM - ENTRANCE ELLS

UL - Standard 514B  
SAB - C22.2 #18

### FEATURES-SPECIFICATIONS

#### Applications

- For use with conduit to act as an elbow between service entrance and vertical entrance cap conduit runs

#### Features

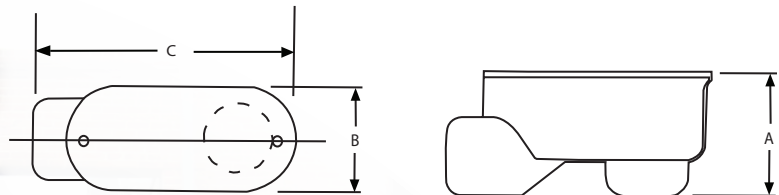
- Lightweight aluminum construction eases installation and provides a corrosion resistance
- Removable cover and gasket allows for easier wire pulling and access to the raceway



EASLB

DIMENSIONS				
CATALOG NUMBER	TRADE SIZE	A	B	C
EASLB-1	1/2"	10	100	-
EASLB-2	3/4"	10	50	-
EASLB-3	1"	6	24	-
EASLB-4	1-1/4"	2	8	-
EASLB-5	1-1/2"	2	8	-
EASLB-6	2"	1	5	-

Service Entrance



### ALUMINUM - COVERS AND GASKETS

UL - Standard 514B  
 NSF - C22.2 #18

#### FEATURES-SPECIFICATIONS

##### Cover Applications

- For use with aluminum conduit bodies

##### Features

- Lightweight aluminum construction provides corrosion resistance and easy installation
- Covers are furnished with zinc plated screws-no worry about removing a cover once it is installed

##### Gasket Applications

- For use with conduit bodies and covers to provide a rain-tight seal

##### Features

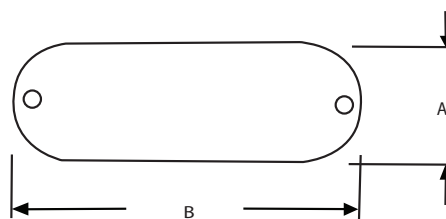
- Gasket materials available: neoprene

GASKETS - NEOPRENE TYPE			
CATALOG NUMBER	TRADE SIZE	DIMENSIONS	
		A	B
EGKN-1	1/2"	1-3/8"	3-29/32"
EGKN-2	3/4"	1-9/16"	4-11/16"
EGKN-3	1"	1-25/32"	5-3/8"
EGKN-4	1-1/4" - 1-1/2"	2-1/2"	7-1/4"
EGKN-5	2"	3-1/8"	9-1/2"
EGKN-6	2-1/2" - 3"	4-1/2"	12-1/4"
EGKN-7	3-1/2" - 4"	5-29/64"	14-13/64"



COVER			
CATALOG NUMBER	TRADE SIZE	DIMENSIONS	
		A	B
ESCV-1	1/2"	1-3/8"	3-29/32"
ESCV-2	3/4"	1-9/16"	4-11/16"
ESCV-3	1"	1-25/32"	5-3/8"
ESCV-4	1-1/4" - 1-1/2"	2-1/2"	7-1/4"
ESCV-5	2"	3-1/8"	9-1/2"
ESCV-6	2-1/2" - 3"	4-1/2"	12-1/4"
ESCV-7	3-1/2" - 4"	5-29/64"	14-13/64"

Cover





ALUMINUM - COVER AND GASKET INCLUDED

UL - Standard 514B  
 SB - C22.2 #18

**FEATURES-SPECIFICATIONS**

**Applications**

- For use on threaded rigid/IMC conduit
- Use conduit outlet bodies for connecting conduit sections, for making bends in conduit runs, as pull outlets, or to provide openings for making splices and taps in conductors

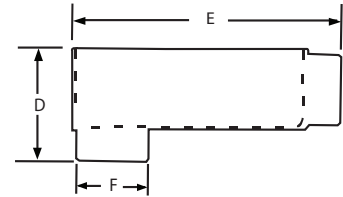
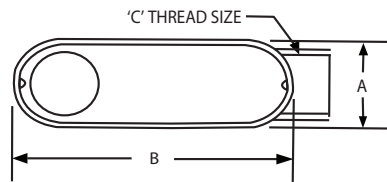
**Features**

- Assembled with cover and gasket to speed installation - installer has all components needed
- Flat back design for easy mounting close to walls
- Cast of high strength, corrosion and weather resistant aluminum alloy with painted finish
- May be used on aluminum or steel conduit
- Lightweight, makes installation simple
- Unique E-PAK™ packaging serves as a shipping and display carton



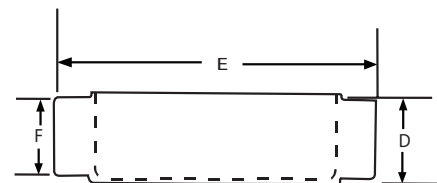
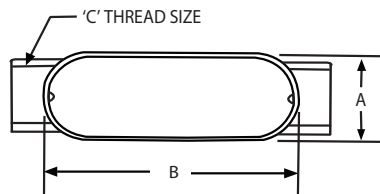
Type LB

TYPE LB								
CATALOG NUMBER	CONDUIT SIZE	DIMENSIONS						E PAK CTN
		A	B	C	D	E	F	
EALB-1CGN	1/2"	1-5/16"	3-7/8"	1/2"	2-7/8"	4-3/32"	1-1/16"	10
EALB-2CGN	3/4"	1-1/2"	4-5/8"	3/4"	2-7/16"	5-1/8"	1-11/32"	10
EALB-3CGN	1"	1-3/4"	5-3/8"	1"	2-13/16"	6-15/16"	1-21/32"	5
EALB-4CGN	1-1/4"	2-1/2"	6-5/8"	1-1/4"	3-3/4"	6-7/8"	2-1/4"	2
EALB-5CGN	1-1/2"	2-1/2"	6-5/8"	1-1/2"	3-3/4"	6-7/8"	2-1/4"	2
EALB-6CGN	2"	3-1/8"	8-1/2"	2"	4-1/8"	9-7/32"	2-15/16"	1
EALB-7CGN	2-1/2"	4-9/16"	12-1/4"	2-1/2"	5-13/16"	13-1/8"	3-7/16"	1
EALB-8CGN	3"	4-9/16"	12-1/4"	3"	5-13/16"	13-1/8"	4-7/64"	1
EALB-9CGN	3-1/2"	5-7/16"	14-7/8"	3-1/2"	7-1/4"	15-3/8"	5-9/64"	1
EALB-10CGN	4"	5-7/16"	14-7/8"	4"	7-1/4"	15-3/8"	5-9/64"	1



Type C

TYPE C								
CATALOG NUMBER	CONDUIT SIZE	DIMENSIONS						E PAK CTN
		A	B	C	D	E	F	
EAC-1CGN	1/2"	1-5/16"	3-7/8"	1/2"	1-7/16"	4-29/32"	1-1/16"	10
EAC-2CGN	3/4"	1-1/2"	4-5/8"	3/4"	1-11/16"	5-1/2"	1-11/32"	10
EAC-3CGN	1"	1-3/4"	5-3/8"	1"	1-15/16"	6-7/16"	1-21/32"	5
EAC-4CGN	1-1/4"	2-1/2"	6-5/8"	1-1/4"	2-7/8"	8-7/16"	2-1/4"	2
EAC-5CGN	1-1/2"	2-1/2"	6-5/8"	1-1/2"	2-7/8"	8-7/16"	2-1/4"	2
EAC-6CGN	2"	3-1/8"	8-1/2"	2"	3-7/16"	10-3/4"	2-15/16"	1
EAC-7CG	2-1/2"	4-9/16"	12-1/4"	2-1/2"	4"	14"	3-7/16"	1
EAC-8CG	3"	4-9/16"	12-1/4"	3"	4-3/4"	13-1/2"	4-7/64"	1
EAC-9CG	3-1/2"	5-7/16"	14-7/8"	3-1/2"	5-1/2"	15-29/32"	5-9/64"	1
EAC-10CG	4"	5-7/16"	14-7/8"	4"	5-1/2"	15-29/32"	5-9/64"	1





# FITTINGS

E SERIES

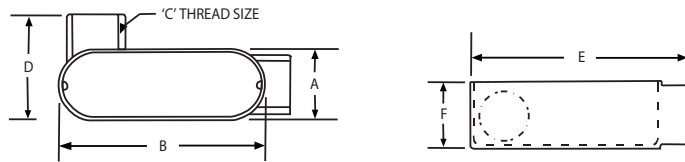


ALUMINUM - COVER AND GASKET INCLUDED



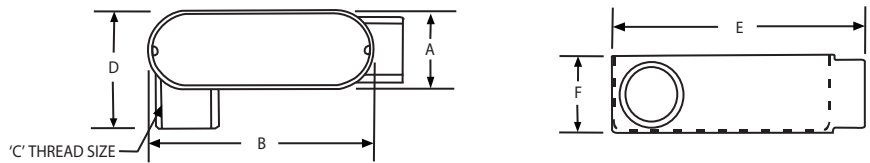
Type LL

CATALOG NUMBER	CONDUIT SIZE	DIMENSIONS						E PAK CTN
		A	B	C	D	E	F	
EALL-1CGN	1/2"	1-5/16"	3-7/8"	1/2"	2-3/64"	4-3/8"	1-7/16"	10
EALL-2CGN	3/4"	1-1/2"	4-5/8"	3/4"	2-5/16"	5-1/8"	1-11/16"	10
EALL-3CGN	1"	1-3/4"	5-3/8"	1"	2-21/32"	5-15/16"	1-15/16"	5
EALL-4CGN	1-1/4"	2-1/2"	6-5/8"	1-1/4"	3-15/32"	6-7/8"	2-7/8"	2
EALL-5CGN	1-1/2"	2-1/2"	6-5/8"	1-1/2"	3-15/32"	6-7/8"	2-7/8"	2
EALL-6CGN	2"	3-1/8"	8-1/2"	2"	3-7/8"	9-7/32"	3-7/16"	1
EALL-7CG	2-1/2"	4-9/16"	12-1/4"	2-1/2"	6"	13-1/8"	4"	1
EALL-8CG	3"	4-9/16"	12-1/4"	3"	6"	13-1/8"	4-3/4"	1
EALL-9CG	3-1/2"	5-7/16"	14-7/8"	3-1/2"	6-1/4"	15-3/8"	5-1/2"	1
EALL-10CG	4"	5-7/16"	14-7/8"	4"	6-1/4"	15-3/8"	5-1/2"	1



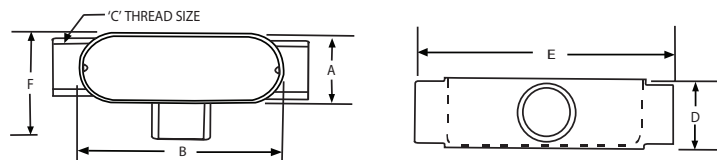
Type LR

CATALOG NUMBER	CONDUIT SIZE	DIMENSIONS						E PAK CTN
		A	B	C	D	E	F	
EALR-1CGN	1/2"	1-5/16"	3-7/8"	1/2"	2-3/64"	4-3/8"	1-7/16"	10
EALR-2CGN	3/4"	1-1/2"	4-5/8"	3/4"	2-5/16"	5-1/8"	1-11/16"	10
EALR-3CGN	1"	1-3/4"	5-3/8"	1"	2-21/32"	5-15/16"	1-15/16"	5
EALR-4CGN	1-1/4"	2-1/2"	6-5/8"	1-1/4"	3-15/32"	6-7/8"	2-7/8"	2
EALR-5CGN	1-1/2"	2-1/2"	6-5/8"	1-1/2"	3-15/32"	6-7/8"	2-7/8"	2
EALR-6CGN	2"	3-1/8"	8-1/2"	2"	3-7/8"	9-7/32"	3-7/16"	1
EALR-7CG	2-1/2"	4-9/16"	12-1/4"	2-1/2"	6"	13-1/8"	4"	1
EALR-8CG	3"	4-9/16"	12-1/4"	3"	6"	13-1/8"	4-3/4"	1
EALR-9CG	3-1/2"	5-7/16"	14-7/8"	3-1/2"	6-1/4"	15-3/8"	5-1/2"	1
EALR-10CG	4"	5-7/16"	14-7/8"	4"	6-1/4"	15-3/8"	5-1/2"	1



Type T

CATALOG NUMBER	CONDUIT SIZE	DIMENSIONS						E PAK CTN
		A	B	C	D	E	F	
EAT-1CGN	1/2"	1-5/16"	3-7/8"	1/2"	1-7/16"	4-29/32"	2-1/8"	10
EAT-2CGN	3/4"	1-1/2"	4-5/8"	3/4"	1-11/16"	5-1/2"	2-11/32"	10
EAT-3CGN	1"	1-3/4"	5-3/8"	1"	1-15/16"	6-7/16"	2-21/32"	5
EAT-4CGN	1-1/4"	2-1/2"	6-5/8"	1-1/4"	2-7/8"	8-7/16"	3-19/32"	2
EAT-5CGN	1-1/2"	2-1/2"	6-5/8"	1-1/2"	2-7/8"	8-7/16"	3-19/32"	2
EAT-6CGN	2"	3-1/8"	8-1/2"	2"	3-7/16"	10-3/4"	4-1/32"	1
EAT-7CG	2-1/2"	4-9/16"	12-1/4"	2-1/2"	4"	14"	6-1/4"	1
EAT-8CG	3"	4-9/16"	12-1/4"	3"	4-3/4"	13-1/2"	6-1/4"	1
EAT-9CG	3-1/2"	5-7/16"	14-7/8"	3-1/2"	5-1/2"	15-29/32"	7"	1
EALB-10CG	4"	5-7/16"	14-7/8"	4"	5-1/2"	15-29/32"	7"	1





A QUICK GLANCE AT THE DIFFERENCE BETWEEN CONDUIT BODIES



### FORM 5 (O-SERIES)

- Die cast copper-free aluminum and Iron
- Compact in size with screw covers
- Interchangeable with competitors Form 5
- Ideal for commercial and heavy industrial locations



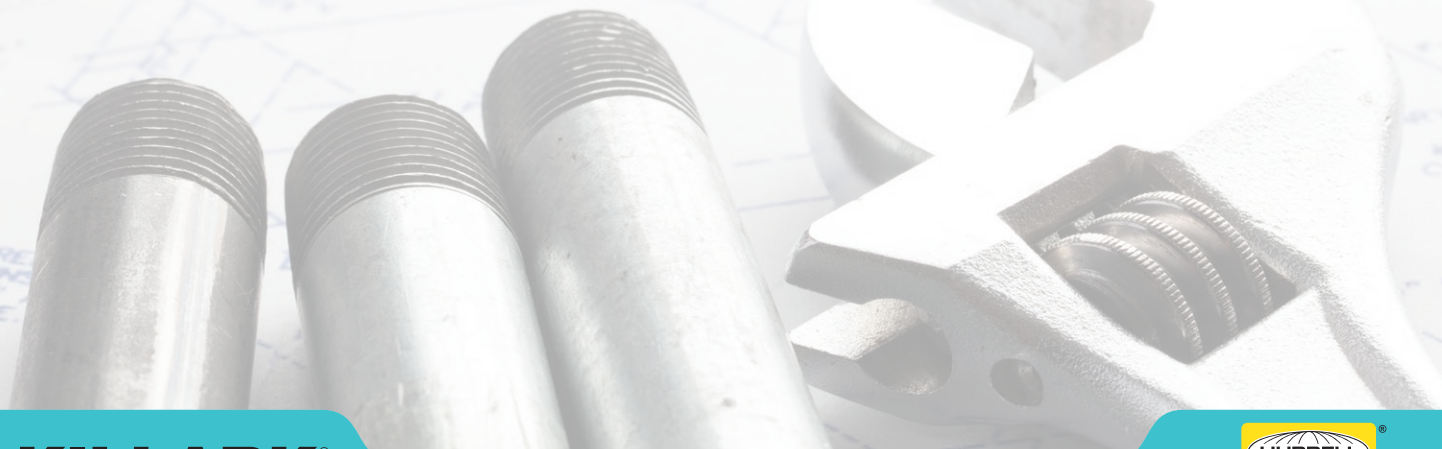
### DURALOY 7

- Die cast copper-free aluminum and Iron
- Compact in size with Spring Clip Cover with integral gasket
- Interchangeable with competitors Form 7
- Ideal for Industrial locations



### DURALOY 8

- Ductile Iron only
- Screw in cover
- Larger volume for extra wiring capacity
- Thick walls ideal for heavy industrial applications





# Complementary Products from Killark



The image shows two steel cord grips, one with an orange interior and one with a blue interior, resting on a technical drawing of a generator receptacle. A pair of pliers is also visible. The drawing includes labels like 'GENERATOR RECEPTACLE', '100A 4P 4W', and 'NORM'. A QR code is located in the bottom right corner of the image area.

## Steel Cord Grips

- Color coded grommets for 'easy to identify' cable sizes
- Compact design for optimal spacing configuration
- Made in the USA



The image shows a close-up of a service entrance hub with a black knockout panel. The hub is mounted on a metal structure, and the background is a chain-link fence. A QR code is located in the bottom left corner of the image area.

## Service Entrance Hubs

- Allows cables and wires to feed into structures
- Multiple knockout configurations available
- For Rigid or EMT conduit
- Allows no water to enter the raceways

HKSB-E 04-19 © Killark, 2019

**KILLARK**<sup>®</sup>

**Hubbell Killark**  
2112 Fenton Logistics Park Blvd. • Fenton, MO 63026  
Phone: (314) 531-0460 • Fax: (314) 531-7164  
[www.hubbell-killark.com](http://www.hubbell-killark.com)

**HUBBELL**<sup>®</sup>  
Harsh & Hazardous