
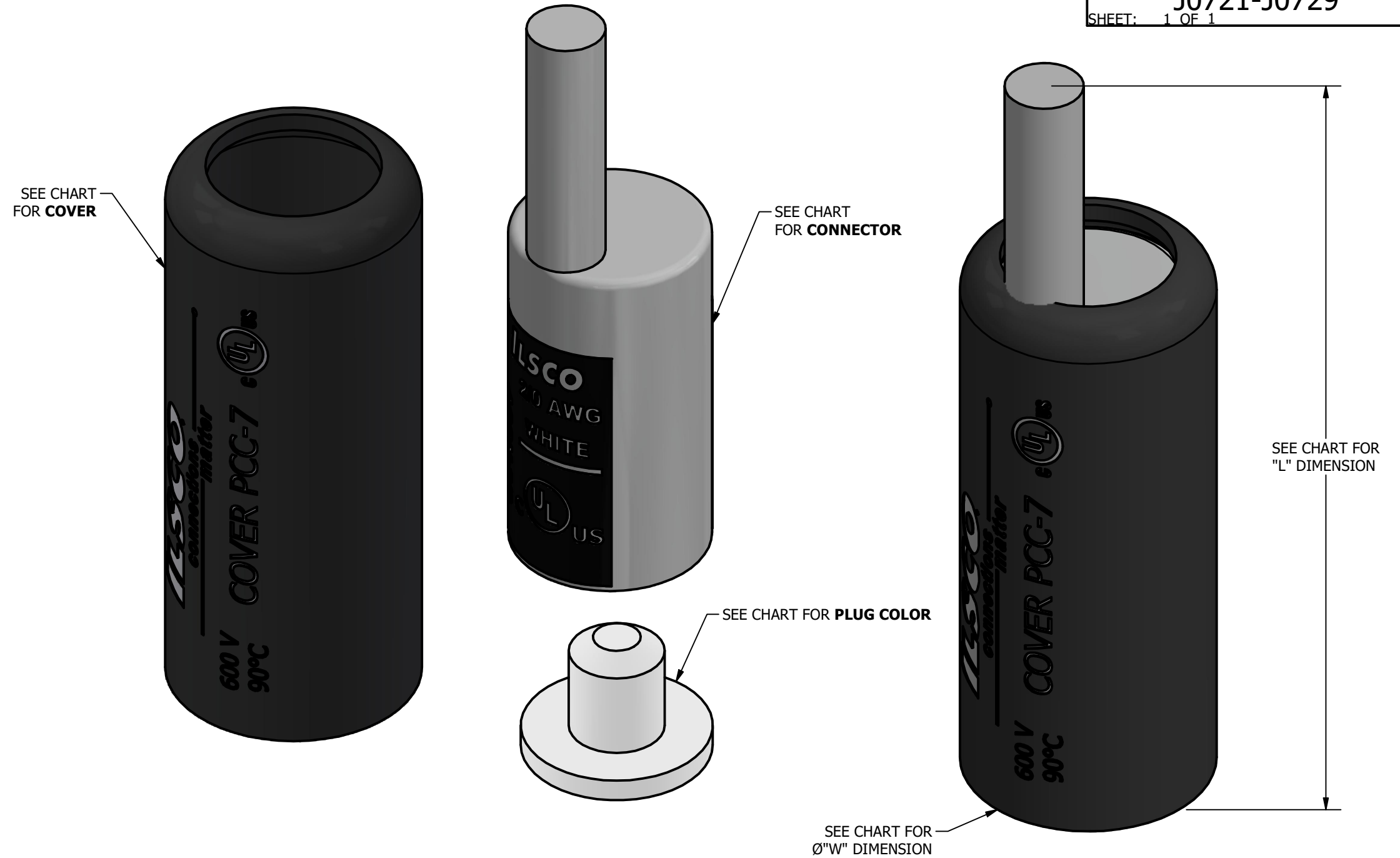
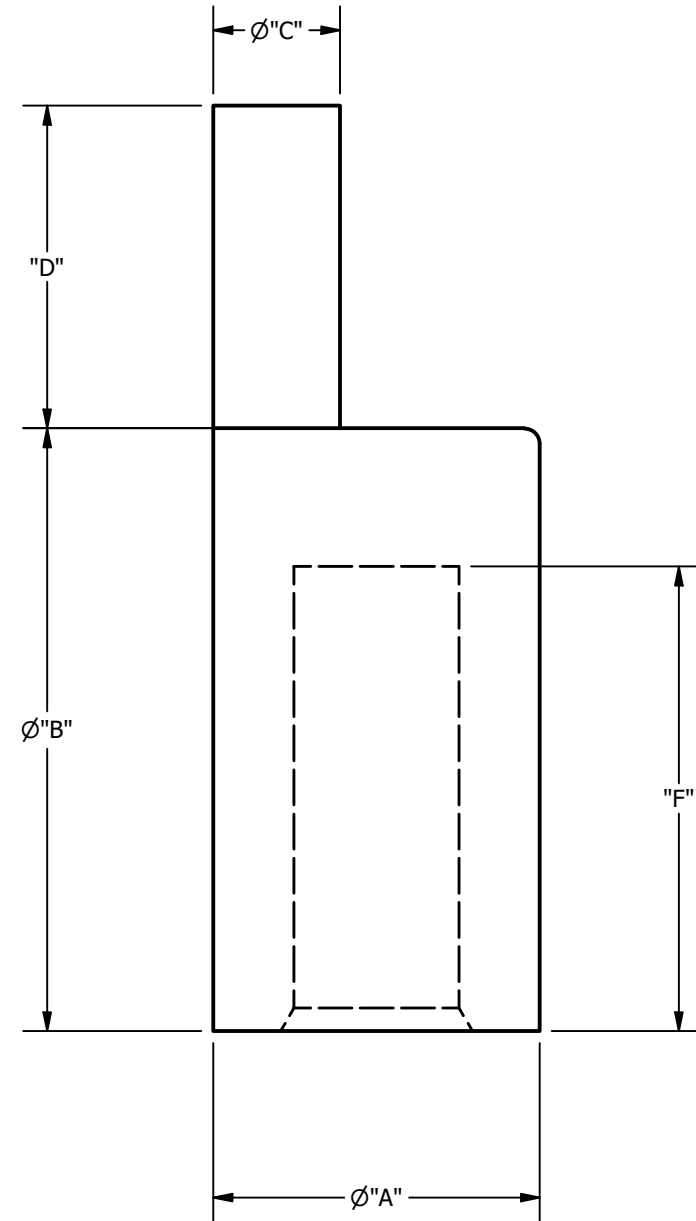


- NOTE:**
1. TIN PLATED ALUMINUM COMPRESSION PIN ADAPTERS.
  2. PRE-FILLED WITH DE-OX INHIBITOR.
  3. INSULATING COVER SUPPLIED WITH CONNECTOR

SCREW: NONE	MATERIAL: ALUMINUM/PLASTISOL	REV: B	 <small>GB Gardner Bender</small> <small>ILSCO</small> <small>KING INNOVATION</small> <small>BERGEN INDUSTRIES, LLC</small> 800-776-9775 www.ilSCO.com	
END ITEM: SEE CHART	PLATING: TIN	DRAWN BY:LU		SCALE:
INFORMATION SHEET:FORM 287	MARKING: SEE DRAWING	DATE:2/17/2023		SIZE: B
			DWG NO: <b>J0721-J0729</b>	
			SHEET: 1 OF 1	



CATALOG NUMBER	COVER CATALOG NUMBER	COLOR PLUG	"L"	"W"	"A"	"B"	"C"	"D"	"F"
ACON-2/0	PCC-7	WHITE	3.608	1.070	0.850	1.570	0.330	1.130	1.277
ACON-4/0	PCC-7	WHITE	3.758	1.070	0.850	1.520	0.420	1.280	1.216
ACON-250	PCC-9	BROWN	4.008	1.285	1.100	1.520	0.470	1.280	1.232
ACON-300	PCC-9	BROWN	4.198	1.285	1.100	1.630	0.530	1.470	1.248
ACON-500	PCC-11	PINK	4.797	1.495	1.310	1.710	0.680	1.690	1.346
ACON-600	PCC-12	YELLOW	5.101	1.895	1.460	2.270	0.730	1.730	1.802
ACON-750	PCC-12	YELLOW	5.088	1.895	1.460	2.470	0.810	1.730	1.848