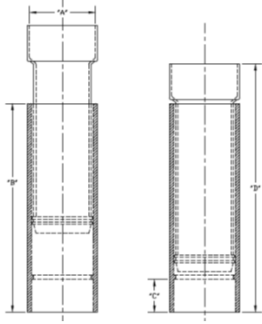


Two-Piece Expansion Couplings

PVC Electrical Conduit Fittings and Accessories



Trade Size (in)	Catalog Part Number	System Part Number	A	B	C	DS
1/2	EJ05	789646	0.88	7.00	0.69	8.13
3/4	EJ07	789647	1.06	7.00	0.88	8.13
1	EJ10	789648	1.31	7.06	1.00	8.38
1 1/4	EJ12	789649	1.69	7.63	1.00	9.00
1 1/2	EJ15	789650	1.94	7.56	1.13	9.00
2	EJ20	789651	2.38	7.69	1.31	9.25
2 1/2*	EJ25	789652	2.88	12.00	1.88	14.94
3	EJ30	789653	3.50	12.00	1.88	14.94
3 1/2*	EJ35	789654	4.00	12.38	2.00	14.88
4	EJ40	789655	4.50	12.31	2.13	14.88
5**	EJ50	789656	5.56	19.25	2.94	24.00
6**	EJ60	789657	6.63	20.81	3.00	26.38

- Dimensions are nominal (inches) and are subject to normal manufacturing tolerances
- 1/2" through 2" maximum expansion 4"
- 2 1/2" through 6" maximum expansion 8"
- *Not UL listed
- Material is Rigid PVC
- See NEC Article 352.44 for use
- Seal is water-tight
- Meets NEMA TC-3 requirements