

AC/MC Fittings

Space-Saver ACB Series Quick-Lok™ Connectors

SPACE-SAVER ACB SERIES – STEEL

Applications:



- Used to join AC/MC cable to a box or enclosure

Features:

- Male threads on locknut allow for more room inside the box
- Smooth pulling surface eliminates the need for insulated throat fittings and/or plastic bushings
- Angled teeth on locknut bite into enclosure, preventing loosening from vibration
- Dual gripping saddle design on the fitting safely secures cable or conduit in place and prevents loosening from vibration
- Tri-head set screw may be installed using a slotted, Phillips or Robertson head screwdriver
- Steel fitting is zinc electroplated for added corrosion resistance
- Suitable for use with steel or aluminum cables
- Dry locations



Certifications and Compliances:

- UL and cUL Listed, File No. E-19188  
- UL Standard 514B
- Certified by UL to CSA Standard C22.2 No. 18

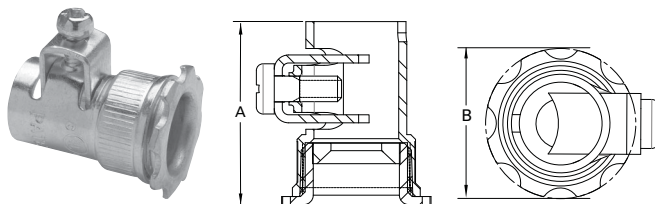
Standard Material:

- Body and nut – steel

Standard Finish:

- Steel – zinc electroplate

UL File No. E-19188



Cat. #	Trade Size	KO Size	Cable Dia. Range		Unit Qty.	Wt. Lbs. Per 100	A	B	C
			Max.	Min.					
SSACB38*	3/8"	1/2"	0.660	0.400	50	9	1.36	1.14	1.31
SSACB50*	1/2"	1/2"	0.920	0.520	25	12	1.39	1.14	1.57
SSACB75	3/4"	3/4"	1.110	0.680	20	14	1.46	1.36	1.71
SSACB100	1"	1"	1.375	0.930	5	30	N/A	N/A	N/A

*UL approved for use with aluminum interlocking grounding metal-clad cable, Type MCIA (Southwire MCAP™).
MCAP™ is a registered trademark of Southwire Company.

QUICK-LOK™ CONNECTORS – STEEL

Features:

- No locknut required
- Single unit or duplex construction with captive clamp
- Connects 50 MC, AC and flex RW cable sizes with just three fittings
- Easy to install: tilt, insert and snap down
- Single unit construction eliminates loose component parts; integral green plastic insulated throat bushing provides maximum protection for wire installation

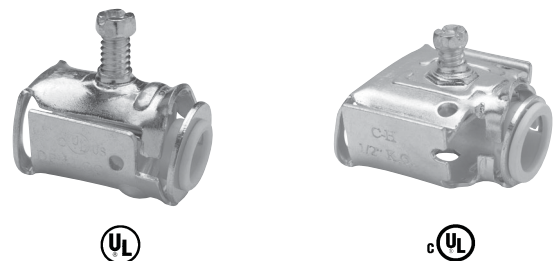
Standard Material:

- Tubular steel

Standard Finish:

- Zinc plated

UL File No. E-19188



AC/MC Fittings

Cat. #	Trade Size	Unit Qty.	Wt. Lbs. Per 100
QLK50S*	1/2" single	50 For 14/4 to 10 /3 For 3/8" FMC	8
QLK50D*	1/2" duplex	25 For 14/4 to 10/3	10
QLK75*	3/4"	25 For 10/3 to 6/3 For 3/8" and 1/2" FMC	14

*UL approved for use with aluminum interlocking grounding metal-clad cable, Type MCIA (Southwire MCAP™).
MCAP™ is a registered trademark of Southwire Company.